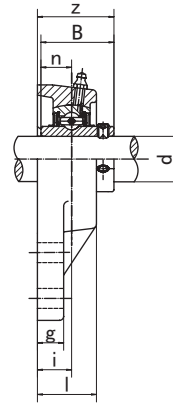
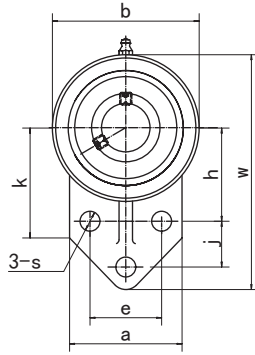


Flange Units

UCFB2 (Normal-duty)



Unit NO.	Dimensions (mm / in.)															Bolt Size mm/in.	Bearing No.	Housing No.	Weight (kg)
	d	w	b	k	a	l	s	g	h	j	e	i	z	B	n				
UCFB201 201-8	12 1/2	110	62	52	52	25.5	10	13	42	27	32	15	33.3	31.0	12.7	M8	UC201	FB201	0.59
UCFB202 202-9 202-10	15 9/16 5/8																UC201-8		0.58
UCFB203 203-11	17 11/16																UC202		0.58
																	UC202-9		0.58
UCFB204 204-12	20 3/4	UC202-10	0.58																
		UC203	0.57																
UCFB205 205-13 205-14 205-15 205-16	25 13/16 7/8 15/16 1	116	68	52	56	27	10	13	45	27	34	16	35.8	34.1	14.3	M8	UC203	FB203	0.56
																	UC203-11		0.55
																	UC204		0.55
																	UC204-12		0.55
UCFB206 206-17 206-18 206-19 206-20	30 1-1/16 1-1/8 1-3/16 1-1/4	130	78	55	65	31	10	13	50	29	40	18	40.2	38.1	15.9	M8	UC204	FB204	0.57
																	UC204-12		0.55
																	UC205		0.64
																	UC205-13		0.67
UCFB207 207-20 207-21 207-22 207-23	35 1-1/4 1-5/16 1-3/8 1-7/16	144	90	62	70	34	10	15	55	32	46	19	44.4	42.9	17.5	M8	UC205-13	FB205	0.66
																	UC205-14		0.66
																	UC205-15		0.64
																	UC205-16		0.63
UCFB208 208-24 208-25	40 1-1/2 1-9/16	164	100	72	78	36	12	16	60	41	50	21	51.2	49.2	19.0	M10	UC206	FB206	0.88
																	UC206-17		0.89
																	UC206-18		0.90
																	UC206-19		0.88
UCFB209 209-26 209-27 209-28	45 1-5/8 1-11/16 1-3/4	174	106	76	80	38	12	18	65	43	54	22	52.2	49.2	19.0	M10	UC206-20	FB207	0.87
																	UC207		1.24
																	UC207-20		1.31
																	UC207-21		1.28
UCFB210 210-29 210-30 210-31 210-32	50 1-13/16 1-7/8 1-15/16 2	184	112	82	86	40	12	18	68	46	58	22	54.6	51.6	19.0	M10	UC207-22	FB207	1.25
																	UC207-23		1.22
																	UC208		1.66
																	UC208-24		1.70
UCFB211 211-32 211-33 211-34 211-35	55 2 2-1/16 2-1/8 2-3/16	207	130	86	90	43	14	18	78	50	62	25	58.4	55.6	22.2	M12	UC208-25	FB208	1.67
																	UC209		1.92
																	UC209-26		2.02
																	UC209-27		1.98
UCFB212 212-36 212-37 212-38 212-39	60 2-1/4 2-5/16 2-3/8 2-7/16	223	140	90	94	48	14	18	84	55	66	29	68.7	65.1	25.4	M12	UC209-28	FB209	1.94
																	UC210		2.21
																	UC210-29		2.33
																	UC210-30		2.28
UCFB213 213-40 213-41	65 2-1/2 2-9/16	244	155	94	100	50	14	20	92	60	70	30	69.7	65.1	25.4	M12	UC210-31	FB210	2.23
																	UC210-32		2.19
																	UC211		3.10
																	UC211-32		3.25
UCFB212 212-36 212-37 212-38 212-39	60 2-1/4 2-5/16 2-3/8 2-7/16	223	140	90	94	48	14	18	84	55	66	29	68.7	65.1	25.4	M12	UC211-33	FB211	3.19
																	UC211-34		3.15
																	UC211-35		3.08
																	UC212		3.87
UCFB212 212-36 212-37 212-38 212-39	60 2-1/4 2-5/16 2-3/8 2-7/16	223	140	90	94	48	14	18	84	55	66	29	68.7	65.1	25.4	M12	UC212-36	FB212	4.00
																	UC212-37		3.92
																	UC212-38		3.85
																	UC212-39		3.78
UCFB213 213-40 213-41	65 2-1/2 2-9/16	244	155	94	100	50	14	20	92	60	70	30	69.7	65.1	25.4	M12	UC213	FB213	4.97
																	UC213-40		5.06
																	UC213-41		4.97